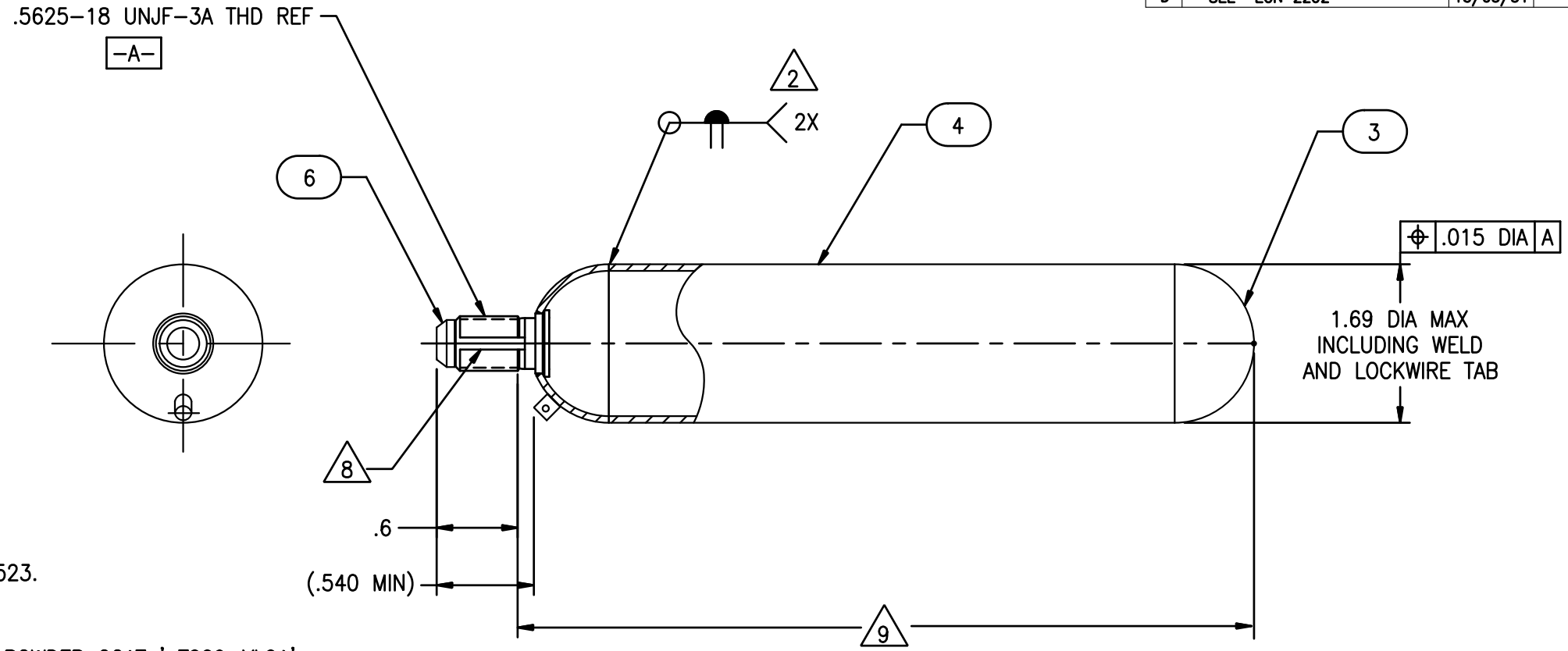


THIS DOCUMENT IS THE PROPERTY OF THE APPLIED PRESSURE VESSELS AND CONTAINS CONFIDENTIAL AND PROPRIETARY INFORMATION, AND SHALL NOT BE COPIED OR REPRODUCED, IN WHOLE OR PART, DIVULGED OR USED FOR DESIGN OR MANUFACTURE WITHOUT SPECIFIC WRITTEN PERMISSION FROM THE APPLIED PRESSURE VESSELS. RECIPIENT, BY THE CUSTODY, USE OR RETENTION OF THIS DOCUMENT, AGREES TO THE FOREGOING AND AGREES TO MAINTAIN THE CONTENTS IN CONFIDENCE.

REVISIONS			
REV	DESCRIPTION	DATE	APPROVED
A	REVISED PER DCN 165	86-3-7	AF
B	SEE ECN #1522	11/06/22	DR
C	SEE ECN #01597	12/01/13	DR
D	SEE ECN 2202	15/03/31	SK



- 11. REF BORG - WARNER DWG 37523.
  - 10. DELETED.
  - 9. COAT EXTERNAL SURFACE WITH POWDER COAT ' T009-YL01' SUPPLIED BY CARDINAL INDUSTRIAL FINISHES. 1329 POTRERO AVE. SOUTH EL MONTE, CA 91733. SURFACE PREPARATION WITH MEK OR ACETONE WIPE OR BATH AT A MINIMUM IS REQUIRED. ONLY A-4108-YL01 MAY BE USED AS A TOUCH FOR SURFACE NICKS OR SCRATCHES AS NEEDED.
  - 8. SHOT PEEN SLOTTED AREAS (2 PL) ALL OTHER SURFACES OPTIONAL, PER MIL-S-13165 AFTER HEAT TREAT. USE NO 11 GLASS BEADS PER MIL-G-9954. PEEN TO .004 N TO .008 N INTENSITY.
  - 7. PROOF TEST TO 11,200 ±1% PSIG FOR 60 SECONDS MIN. NO PERMANENT DEFORMATION ALLOWED.
  - 6. HYDROSTATICALLY BURST TEST AND RECORD BURST PRESSURE. A MIN OF ONE (1) SAMPLE PER EACH HEAT TREAT LOT.
  - 5. MAGNETIC PARTICLE INSPECT PER MIL-STD-1949, CONTINUOUS, WET, FLUORESCENT, CIRCULAR AND LONGITUDINAL METHOD. NO DEFECTS ALLOWED.
  - 4. HEAT TREAT : 165-180 KSI PER AMS-H-6875.
  - 3. DELETED.
  - 2. INERT GAS WELD AS NOTED PER MIL-W-8611
  - 1. INTRERPRET DWG PER MIL-D-1000
- NOTES: UNLESS OTHERWISE SPECIFIED

CONTROLLED DOCUMENTS  
 ISSUE# \_\_\_\_\_  
 DATE \_\_\_\_\_

ITEM NO.	QTY RECD	PART OR IDENTIFYING NO.	NOMENCLATURE OR DESCRIPTION	MATERIAL SPECIFICATION
6	1	10588	CAP ASSEMBLY	
5				
4	1	10380	CYLINDER	
3	1	10381	SHELL, CYLINDER	
2				
1				

UNLESS OTHERWISE SPECIFIED DIMENSIONS ARE IN INCHES TOLERANCES ARE: FRACTIONS ± DECIMALS .X=±.03 .XX=±.010 ANGLES ±0.30		CONTRACT NO.		<b>APPLIED PRESSURE VESSELS</b>					
MATERIAL		APPROVALS						DATE	
272-9		DRAWN L. ZYKIN		02/02/04		<b>CYLINDER ASSY - GAS SUPPLY TANK</b>			
NEXT ASSY		CHECKED R. CAHILL		30 SEP 83					
USED ON		ISSUED L. RICKMANN		17 OCT 83		SIZE C	FSCM NO. 72QQ7	DWG. NO. 10385	REV. D
APPLICATION		DO NOT SCALE DWG		Q.A.		SCALE NONE	JOB NO. XXXX	SHEET 1 of 1	