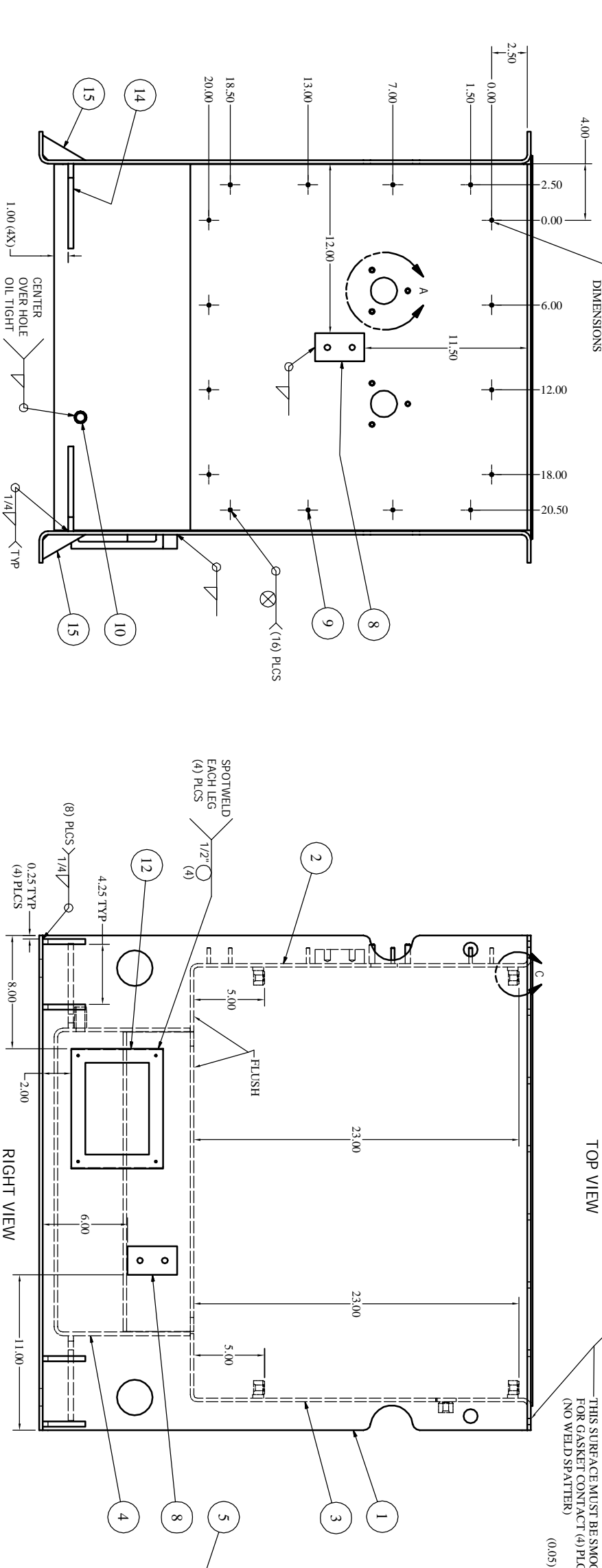
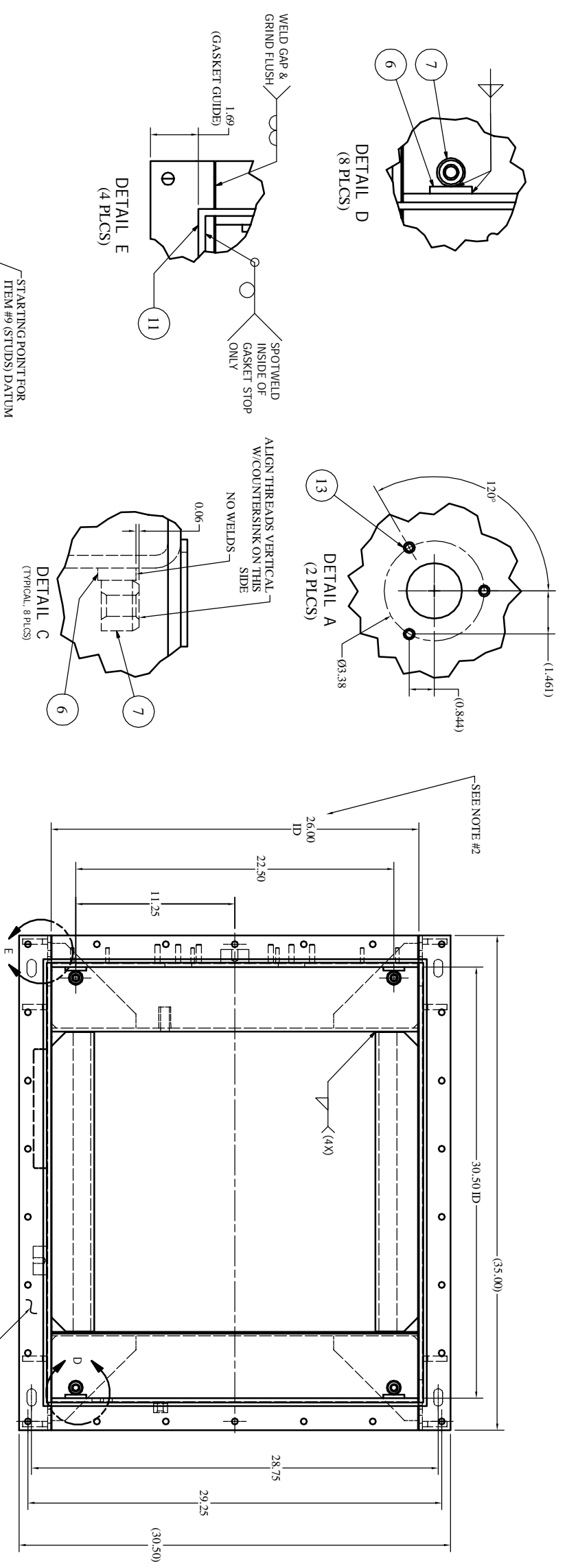


Parts List

ITEM	QTY	PART NUMBER	DESCRIPTION
1	2	430-0082-027	L & R SIDE CHANNEL
2	1	430-0083-047	POWER Z CHANNEL, 2-HOLE
3	1	430-0084-024	TANK Z CHANNEL, N-METER
4	1	430-0080-034	BOTTOM "U" CHANNEL
5	2	430-0080-035	CORE SUPPORT BRACKET
6	8	430-0080-059	1/4 X 3/4 X 1-1/2 LG MILD STEEL BAR
7	8	130-0175-001	1/2-13 WELD PAD, M/S
8	2	130-0025-004	NEMA GROUND PAD, 1" THICK S/S
9	16	105-5078-002	1/4-20 X 1.13 LG WELD STUD, S/S
10	1	111-0030-001	1/2" NPT PIPE NIPPLE, STAIN STEEL
11	1	104-1225-118	1/8X1/4X117" LG GASKET GUIDE
12	1	130-0100-013	NAMEPLATE MTG BRACKET, 16GA S/S
13	6	105-5078-012	3/8-16 X 1.38 LG WELD STUD, STAIN STEEL
14	4	430-0080-049	3/8" THICK GUSSET, FOR SSVT TANKS
15	8	430-0080-055	3/8" THICK GUSSET, 1.75 X 3.00
16	1	130-0175-003	1/2-13 WELD PAD, STAIN STEEL

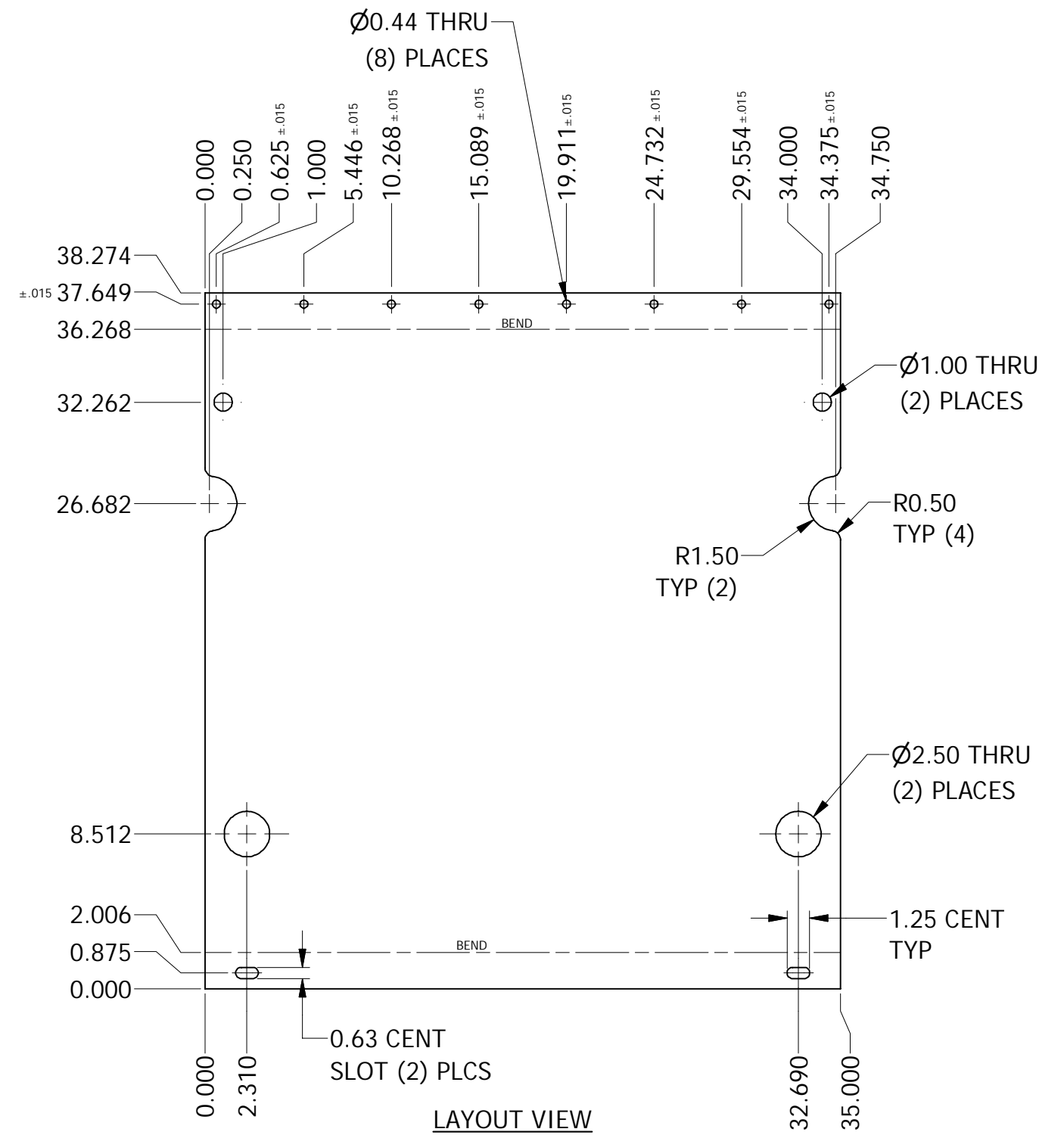
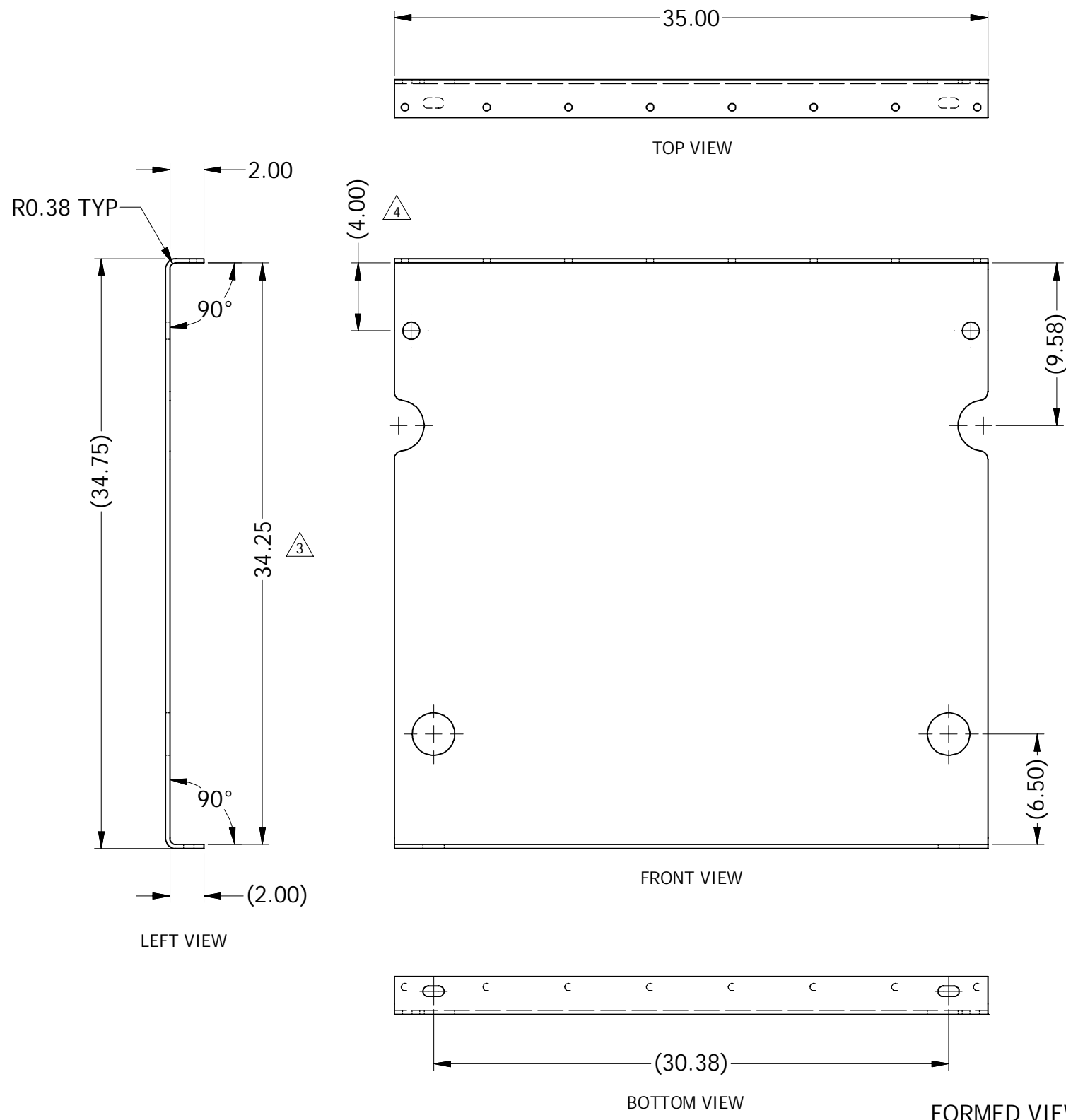
- NOTES:
- BEFORE WELDING, SET UP TOP DETAILS ON TANK COVER PLATE & ALIGN END HOLES WITH 7/16" BOLTS.
 - TANK INSIDE DIMENSION 26.00" NEEDS TO BE MAINTAINED ±.06. ITEM #2 AND ITEM #3 (Z CHANNELS) ARE DESIGNED SO THAT THERE WILL BE A 1/16" GAP BETWEEN Z CHANNELS AND SIDES.
 - PRIOR TO SHOT-BLAST AND PAINT: PLACE 1/2-13 X 1.0 LG BOLTS IN ALL TAP PADS. REMOVE ALL SHOT GRIT PRIOR TO WASH. MASK THE FACE OF ITEM #8 GROUND PAD (2 PLCS)
 - POWDER COAT PAINT TYPE ~ ANSI 70 GRAY, INTERPON 800, VT-401 GLOSS AT 60° ~ 55-65 APPLICATION ~ 3 TO 5 MILLS THICK



REV	REVISION	DATE	BY	REV	REVISION	DATE	BY
1	CORE CLAMP LUGS - 5" DIM WAS 7.50 (20120768)	6/9/2011	DS	1			
2	REVISED FOR HIGH SEISMIC	6/9/2011	DS	2			
3	ITEM #12 WAS (2) #10 WELD PADS. DETAIL VIEW "B" REM.	8/10/2015	DS	3			

ABB INSTRUMENT TRANSFORMER DIVISION
 101 KUHLMAN DR. CRYSTAL SPRINGS, MS 39059
TANK WELDMENT, SSVT-350/550
2-LV BUSHINGS, NON-METER, HSLA

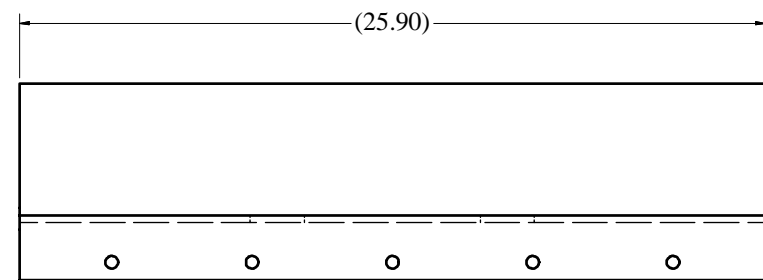
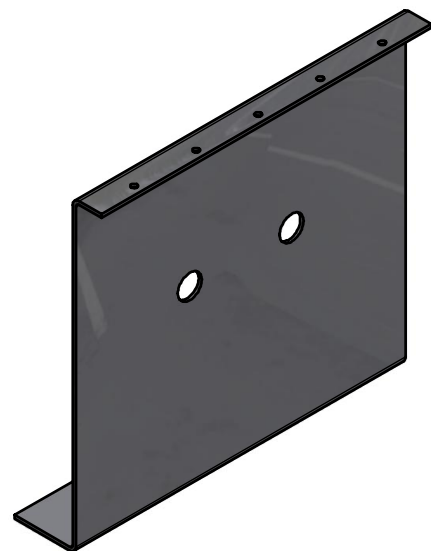
DRAWG NO. **630-0550-005**
 DRWN/APPD **D. SHAFER/**
 DATE **1/22/2008**
 TOLERANCES EXCEPT WHERE NOTED
 FRACT **±1/16** DEC **±.06** ANG **±1°** SCALE **NTS**



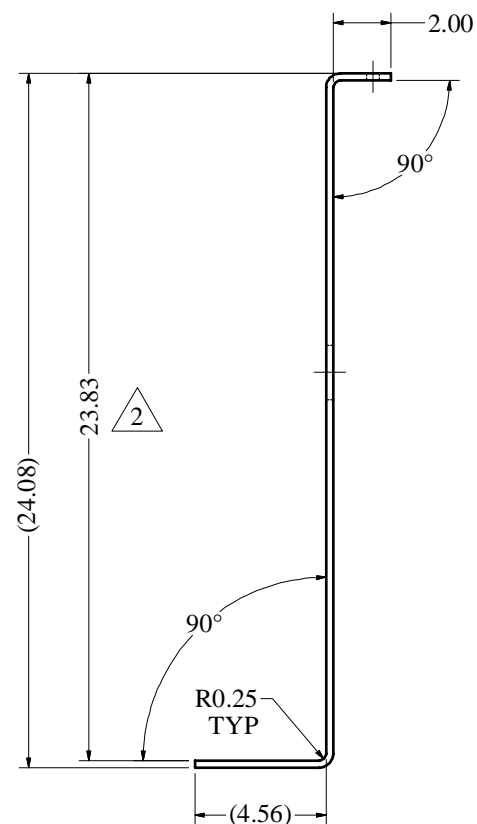
MATERIAL ~ 1/4" THICK HSLA, A572 GRADE 50
 NOTE: BREAK ALL OUTER EDGES

REVISION HISTORY				
REV	DESCRIPTION	KCR	DATE	BY
1	+/- .010 TOL ADDED TO 0.44 DIA HOLES	8274	6/4/03	DS
2	MATERIAL WAS HSLA	N/A	11/29/11	DS
3	DIM WAS 33.50, LAYOUT VIEW ADDED, REDRAWN	20120768	8/9/12	DS
4	UPPER LIFT HOLES WERE 2.75" FROM FLANGE	201300059	1/17/2013	DS

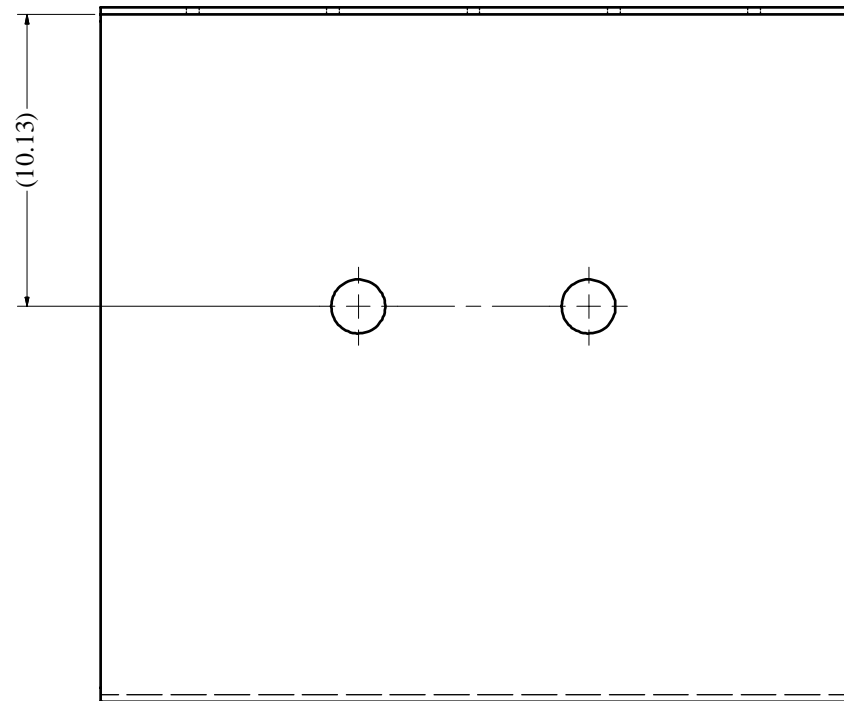
ABB KUHLMAN INSTRUMENT TRANSFORMER DIVISION 101 KUHLMAN DR. CRYSTAL SPRINGS, MS 39059	DRAWING NO 430-0082-027.IDW	SH OF REV 4
	DRAWN BY D SHAFER	APPROVED
TITLE SSVT-250/350/550 L & R SIDE CHANNEL	TOLERANCES EXCEPT WHERE NOTED FRACT ±1/16 DEC ±.06 ANG ±1'	
		SCALE NTS



TOP VIEW

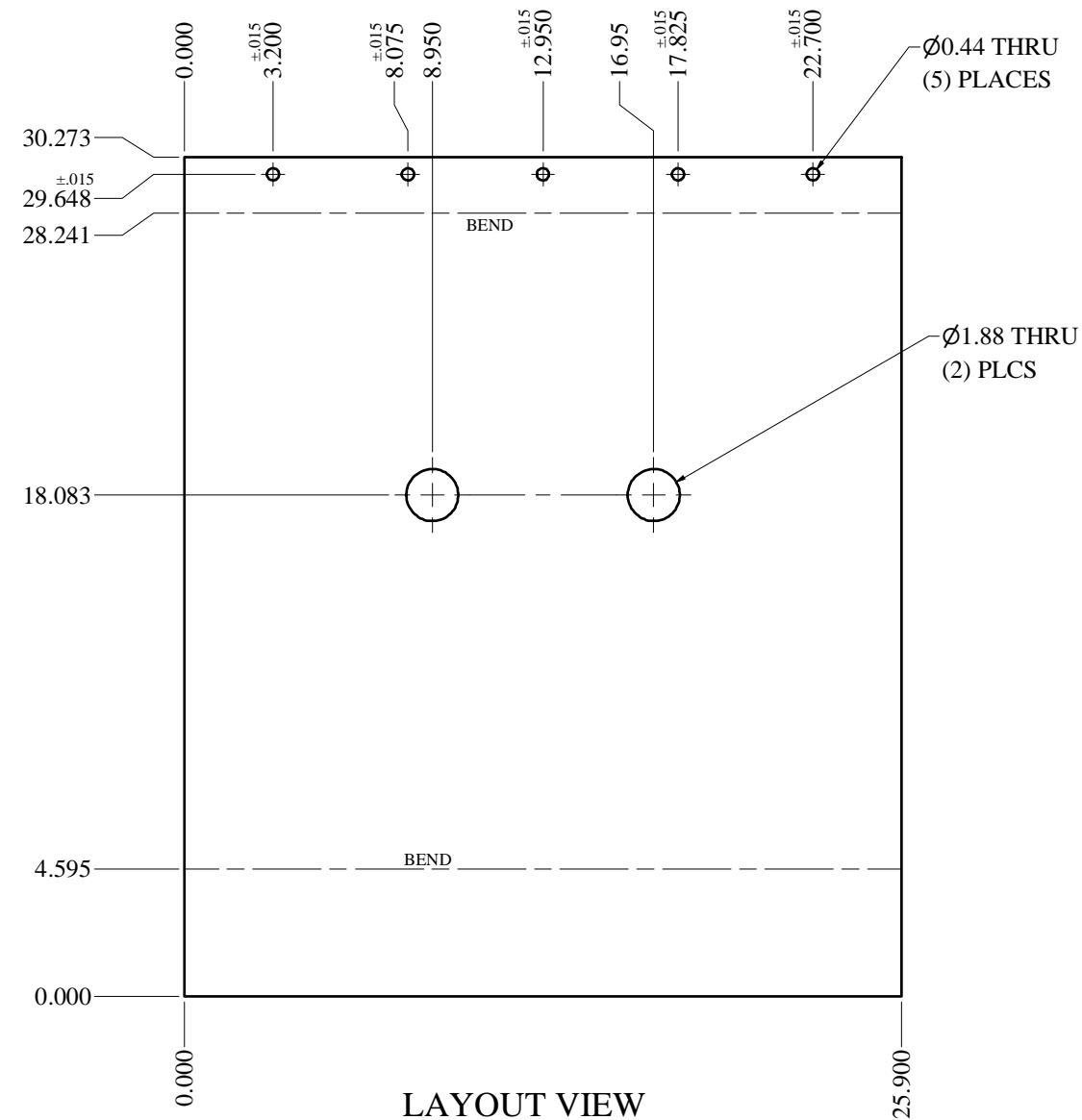


LEFT VIEW



FRONT VIEW

FORMED VIEWS



LAYOUT VIEW

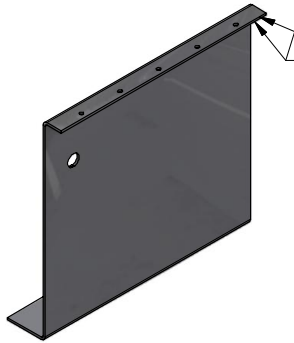
MATERIAL ~ 1/4" THICK HSLA
A572 GRADE 50

REVISION HISTORY				
REV	DESCRIPTION	KCR	DATE	BY
1	MATERIAL DESC WAS HSLA	N/A	11/29/11	D SHAFER
2	DIM WAS 23.08", VIEWS UPDATED TO STANDARD	20120768	11/27/12	D SHAFER

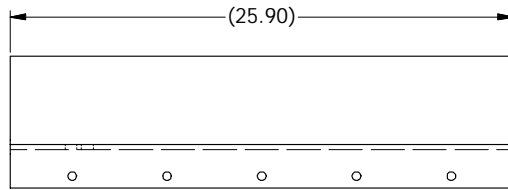


TITLE POWER SIDE "Z" CHANNEL, HSLA
SSVT-350/550, 2-BUSHING

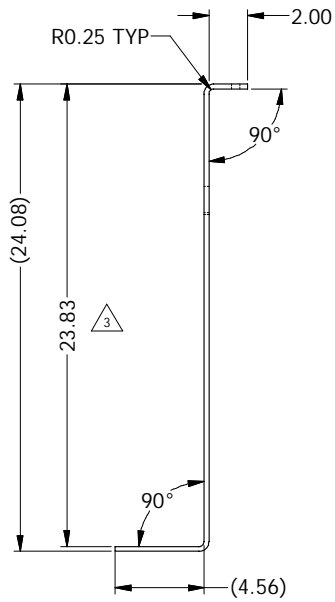
DRAWING NO 430-0083-047.IPT		SH 1	OF 1	REV 2
DRAWN BY D SHAFER		APPROVED R.C.		DATE 9/24/2007
TOLERANCES EXCEPT WHERE NOTED FRACT ±1/16 DEC ±.06 ANG ±1'				SCALE NTS



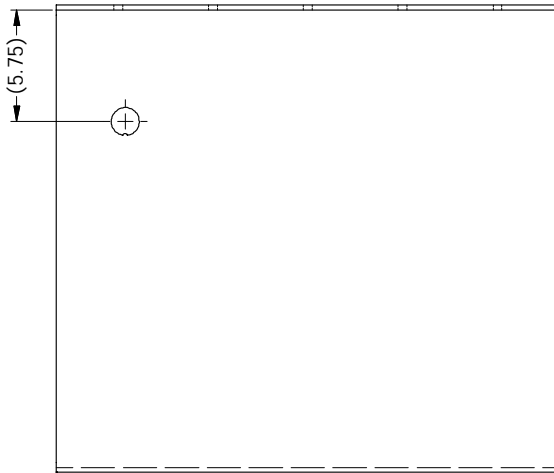
BREAK THESE EDGES



TOP VIEW

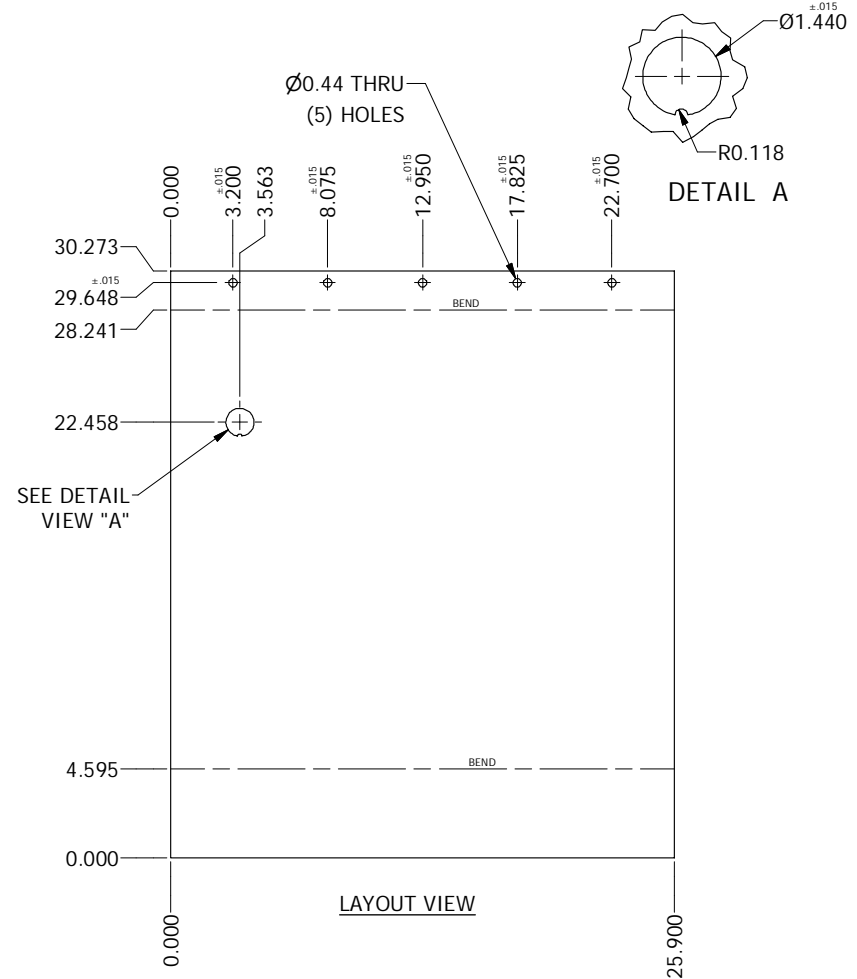


LEFT VIEW



FRONT VIEW

FORMED VIEWS



LAYOUT VIEW

MATERIAL - 1/4" THICK HSLA, A572 GRADE 50

REVISION HISTORY				
REV	DESCRIPTION	KCR	DATE	BY
1	0.44 BOLT PATTERN REVISED	N/A	4/1/2010	DS
2	MAT'L DESCRIPTION WAS HSLA	N/A	11/29/11	DS
3	WAS 23.08 TALL, REDRAWN, LAYOUT VIEW ADDED	20120768	8/9/12	DS

ABB ABB KUHLMAN
 INSTRUMENT TRANSFORMER DIVISION
 101 KUHLMAN DR. CRYSTAL SPRINGS, MS 39069

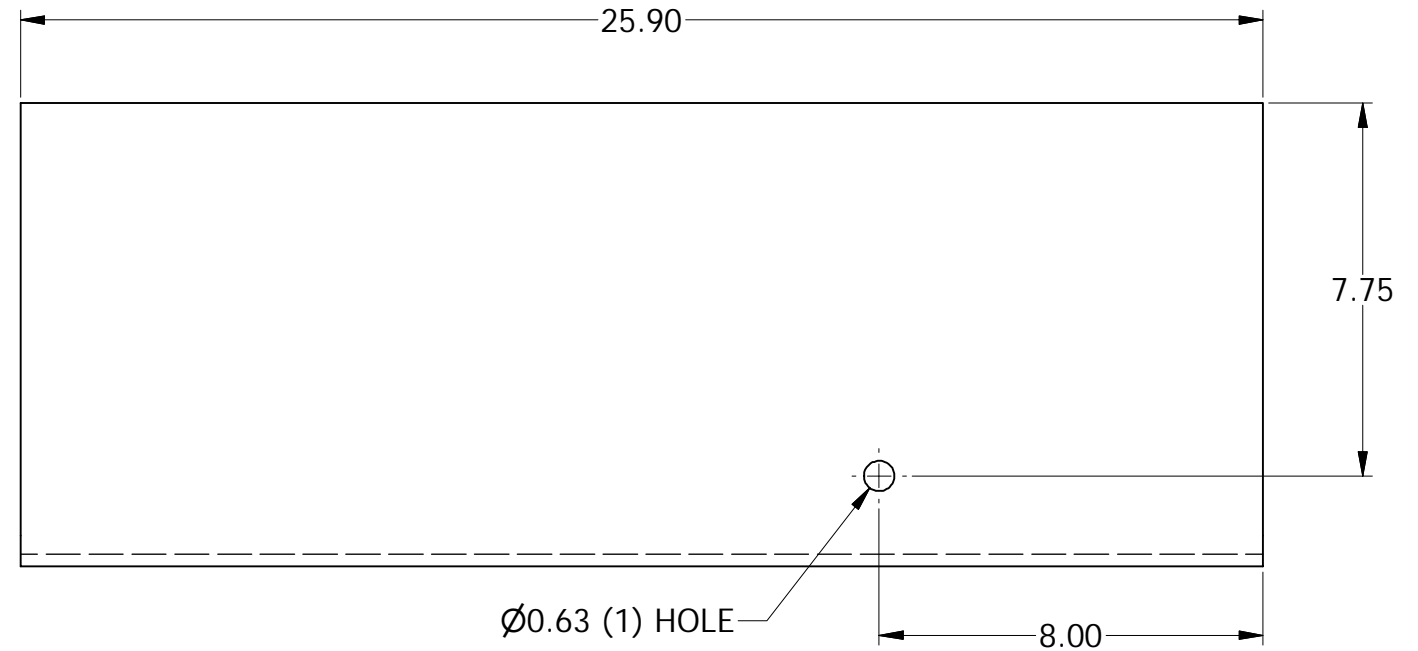
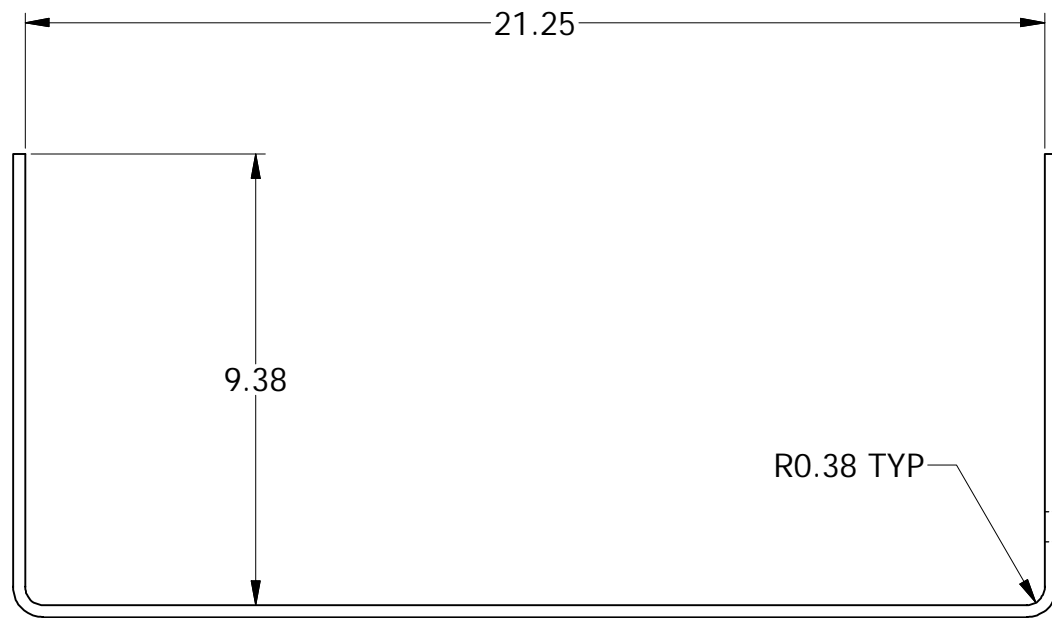
THIS DRAWING IS SOLE PROPERTY OF ABB KUHLMAN.
 UNAUTHORIZED DISTRIBUTION OF THIS DRAWING IS PROHIBITED.

TITLE **SSVT-250/350/550**
TANK Z CHANNEL, N-METER

DRAWING NO **430-0084-024.IDW** SH OF REV
 1 1 3


DRAWN BY **D SHAFER** APPROVED DATE **8/9/2012**

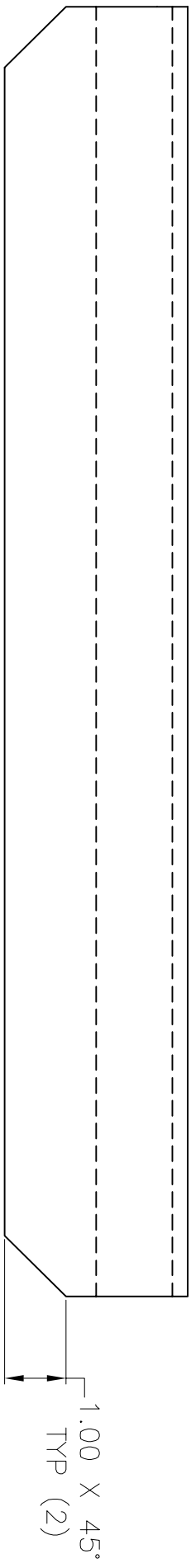
TOLERANCES EXCEPT WHERE NOTED
 FRACT ± 1/16 DEC ± .06 ANG ± 1' SCALE NTS



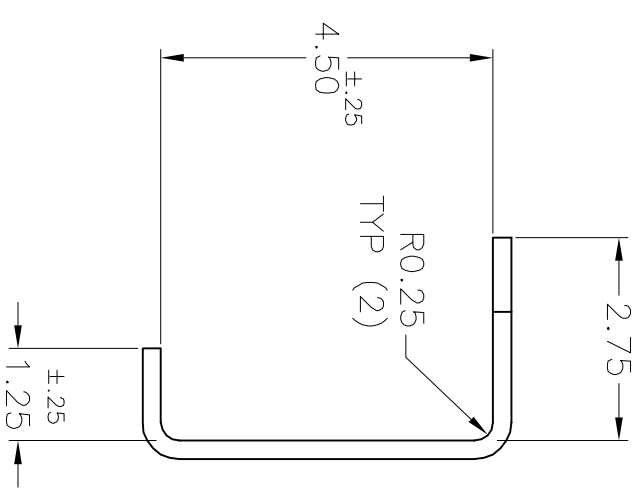
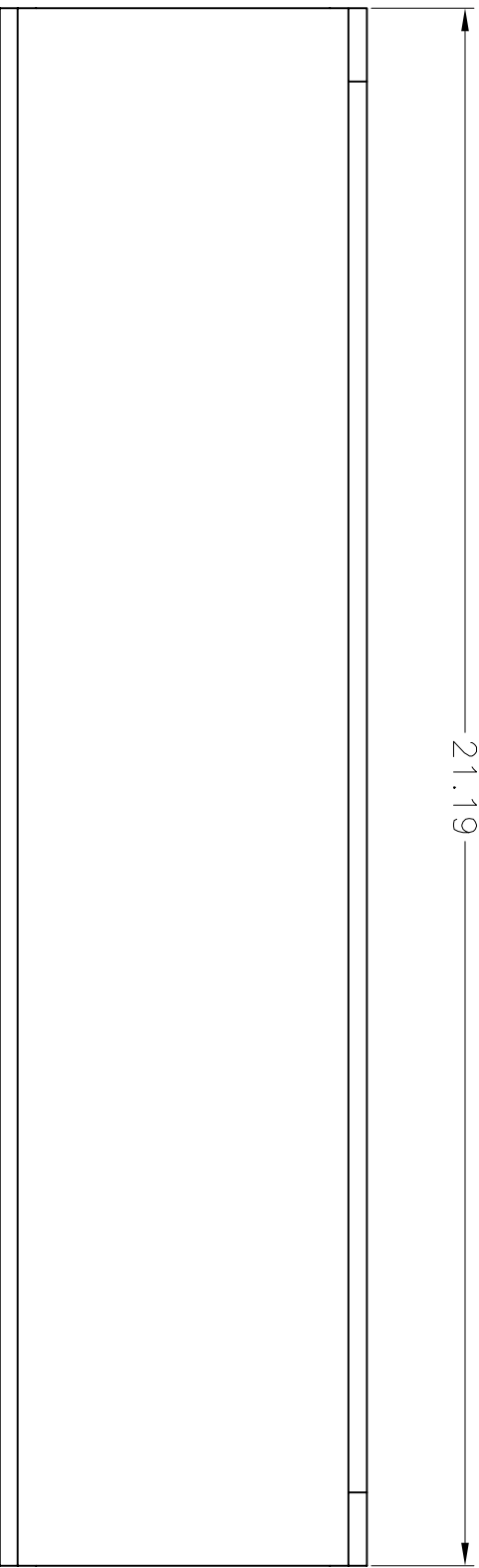
MATERIAL ~ 1/4" HSLA, A572 GRADE 50

REVISION HISTORY				
REV	DESCRIPTION	KCR	DATE	BY
1	.625" HOLE WAS 1.38 DIA	7705	1/10/03	DS
2	MAT'L DESCRIPTION WAS "HSLA"	N/A	11/29/11	DS
3	8.00" HOLE LOC DIM WAS 2.88"	N/A	5/1/12	DS

 ABB KUHLMAN INSTRUMENT TRANSFORMER DIVISION 101 KUHLMAN DR. CRYSTAL SPRINGS, MS 39059	DRAWING NO 430-0080-034.IDW	SH OF REV 1 1 3
	DRAWN BY D SHAFER	APPROVED
TITLE TANK BOTTOM CHANNEL BOTTOM "U" CHANNEL	TOLERANCES EXCEPT WHERE NOTED FRACT ±1/16 DEC ±.06 ANG ±1'	
THIS DRAWING IS SOLE PROPERTY OF ABB KUHLMAN. UNAUTHORIZED DISTRIBUTION OF THIS DRAWING IS PROHIBITED.		SCALE NTS

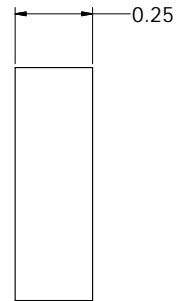
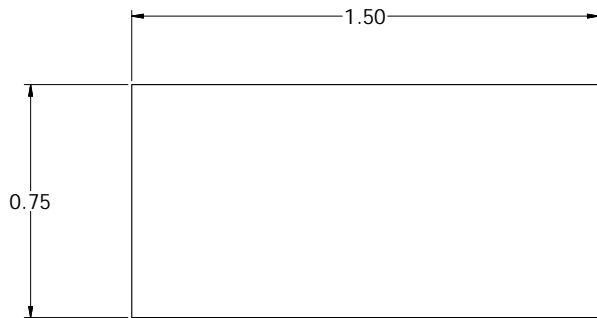


21.19



MATERIAL ~ 1/4" HSLA, A572 GRADE 50

REV	REVISION	DATE	BY	REV	MAT'L DESCRIPTION WAS "HSLA"	REVISION	DATE	BY	DS	ABB ABB KUHLMAN INSTRUMENT TRANSFORMER DIVISION 101 KUHLMAN DR. CRYSTAL SPRINGS, MS 39059	DRWG. NO.	SH	OF	REV				
											430-0080-035	1	1	1				
											DRWN/APPD	TOLERANCES EXCEPT WHERE NOTED						
											D SHAFER	±1/32	DEC	±.03	ANG	±1°	SCALE	NTS
											DATE							



MATERIAL ~ 1/4 X 3/4" MILD STEEL

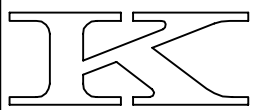
REVISION HISTORY				
REV	DESCRIPTION	KCR	DATE	BY

ABB ABB KUHLMAN
 INSTRUMENT TRANSFORMER DIVISION
 101 KUHLMAN DR. CRYSTAL SPRINGS, MS 39069

THIS DRAWING IS SOLE PROPERTY OF ABB KUHLMAN.
 UNAUTHORIZED DISTRIBUTION OF THIS DRAWING IS PROHIBITED.

TITLE
1/4 x 3/4 x 1-1/2" LG MILD STEEL BAR

DRAWING NO 430-0080-059.IDW	SH 1	OF 1	REV 0
DRAWN BY D SHAFER	APPROVED	DATE 1/17/2013	
TOLERANCES EXCEPT WHERE NOTED FRACT ± 1/16 DEC ± .06 ANG ± 1'			SCALE NTS



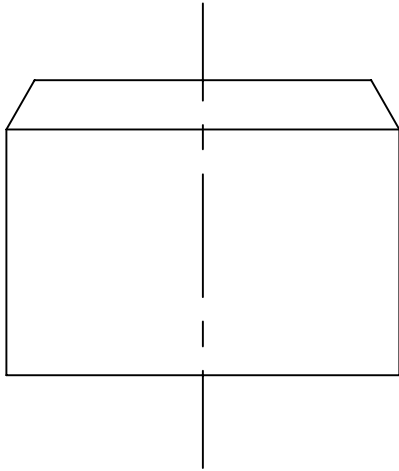
KUHLMAN ELECTRIC CORPORATION
 INSTRUMENT TRANSFORMER DIVISION
 101 KUHLMAN DR. CRYSTAL SPRINGS, MS 39059

DRWG NO **130-0175-001** SH 1 OF 1 REV 2

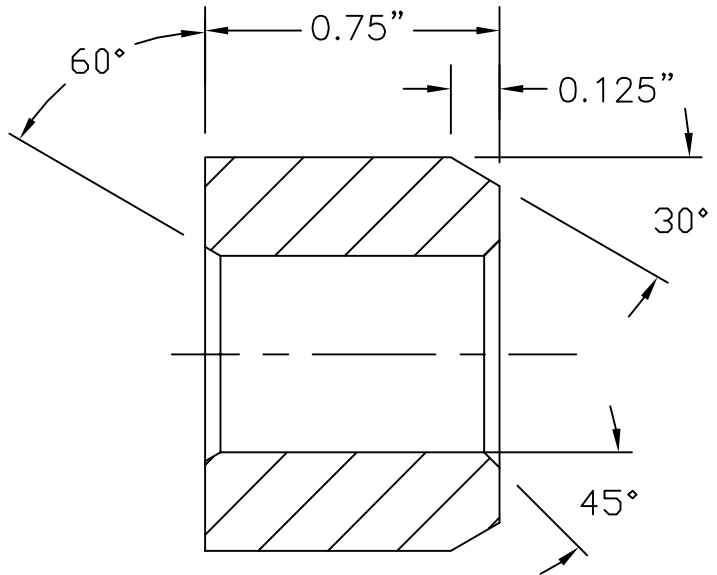
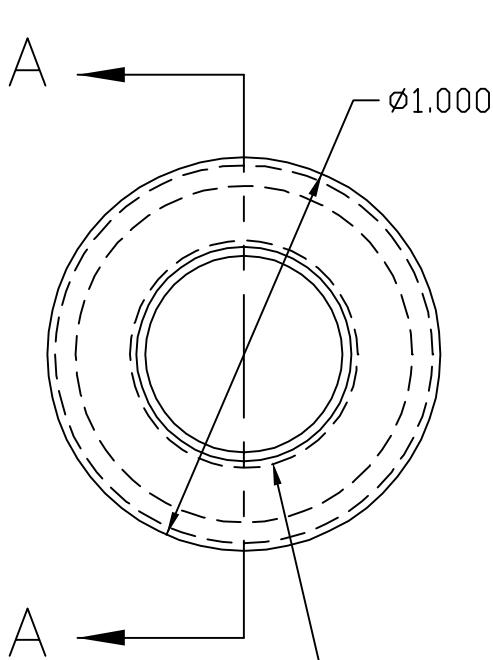
DRWN/APPD **R. O.** DATE **4/24/86**

TITLE **TAPPED WELD PAD - 1/2-13 MILD STEEL**

TOLERANCES EXCEPT WHERE NOTED
 FRACT $\pm 1/32$ DEC $\pm .03$ ANG $\pm 1^\circ$ SCALE **NTS**



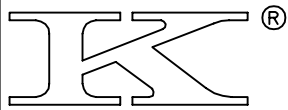
NOTE:
 1. SCALE: 2=1
 2. MATERIAL: LEDLOY STEEL
 MILD STEEL



SECTION A-A

1/2"-13 UNC TAP
 FROM THIS END

2	REVISED TITLE BLOCK	4/14/98	RSC
1	REDRAWN IN CAD	2/1/91	KB
REV	REVISION	DATE	BY



KUHLMAN ELECTRIC CORPORATION
 INSTRUMENT TRANSFORMER DIVISION
 101 KUHLMAN DR. CRYSTAL SPRINGS, MS 39059

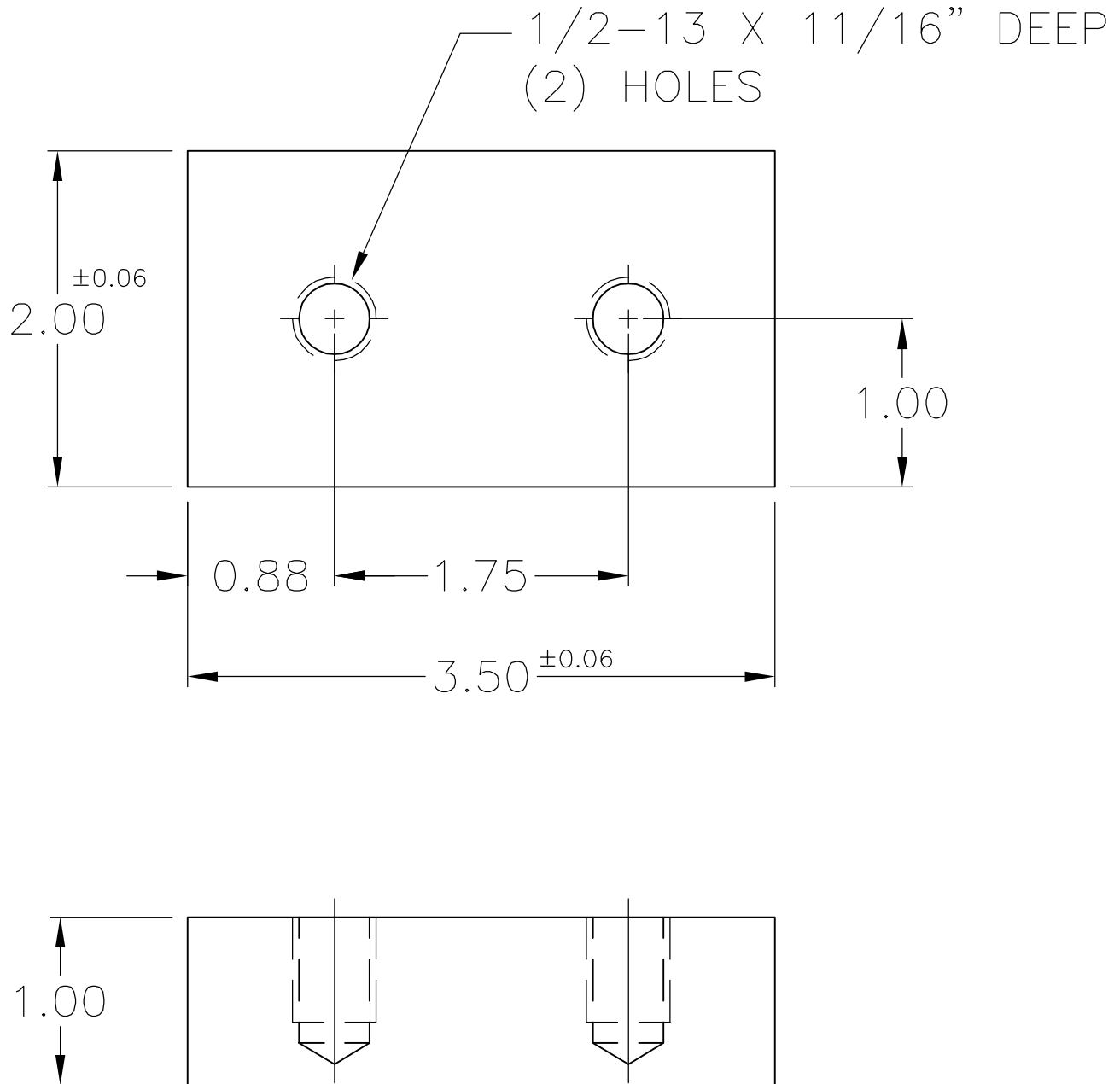
DRWG NO **130-0025-004** SH **1** OF **1** REV **1**

DRWN/APPD **R. CHEATWOOD** DATE **8/15/02**

TITLE **GROUND PAD**
NEMA STANDARD

TOLERANCES EXCEPT WHERE NOTED
 FRACT $\pm 1/16$ DEC $\pm .06$ ANG $\pm 1^\circ$ SCALE **NTS**

MATERIAL: STAINLESS STEEL (300 SERIES)



REV	REVISION	DATE	BY
1	TAPS & THICKNESS REVISED (KCR #7463)	10/15/02	DS



ABB KUHLMAN
 INSTRUMENT TRANSFORMER DIVISION
 101 KUHLMAN DR. CRYSTAL SPRINGS, MS 39059

DRWG NO 105-5078-000

SH 1 OF 1 REV 1

DRWN/APPD
R. CHEATWOOD/

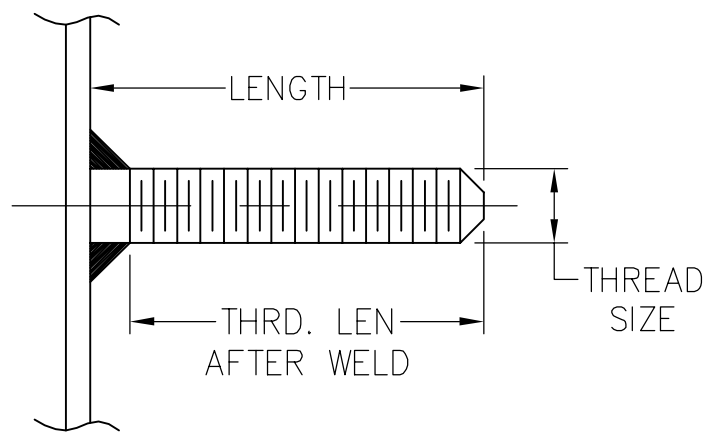
DATE
5/14/98

TITLE
**WELD STUDS
 STAINLESS STEEL**

TOLERANCES EXCEPT WHERE NOTED
 FRACT $\pm 1/32$ DEC $\pm .03$ ANG $\pm 1^\circ$ SCALE NTS

ITEM	THRD. SIZE	LENGTH	THRD. LENGTH AFTER WELD
001	1/4-20	1.88"	1.75"
002	1/4-20	1.13"	1.00"
003	5/16-18	1.88"	1.75"
004	5/16-18	1.38"	1.25"
005	1/4-20	1.38"	1.25"
006	3/8-16	1.63"	1.50"
007	1/2-13	5.13"	5.00"
008	1/2-13	1.88"	1.75"
009	1/2-13	2.13"	2.00"
010	3/8-16	2.13"	2.00"
011	1/2-13	3.13"	3.00"
012	3/8-16	1.38"	1.25"
013	5/16-18	4.13"	4.00"
014	3/8-16	6.63"	6.50"
015			
016	1/4-20	3.00"	2.875"
017	5/16-18	1.12"	1.00"
018	5/16-18	2.50"	2.38"
019	1/2-13	1.50"	1.38"
020	3/4-16	2.00"	1.88 OR 1.75
021	1/4-20	0.75"	0.625
022	1/2-13	2.00"	1.875"
023			
024	5/8-11	5.00"	4.88"
025	1/2-13	2.50"	2.38"
026	5/8-11	3.00"	2.88"
027	3/8-16	1.75"	1.62"
028			
029			
030			
031			
032			
033			

ITEM	THRD. SIZE	LENGTH	THRD. LENGTH AFTER WELD
034			
035			
036			
037			
038			
039			
040			
041			
042			
043			
044			
045			
046			
047			
048			
049			
050			
051			
052			
053			
054			
055			
056			
057			
058			
059			
060			
061			
062			
063			
064			
065			
066			



REV	REVISION	DATE	BY
1	LENGTHS REVISED, REF KCR #5239	5/30/01	DS



ABB KUHLMAN
INSTRUMENT TRANSFORMER DIVISION
101 KUHLMAN DR. CRYSTAL SPRINGS, MS 39059

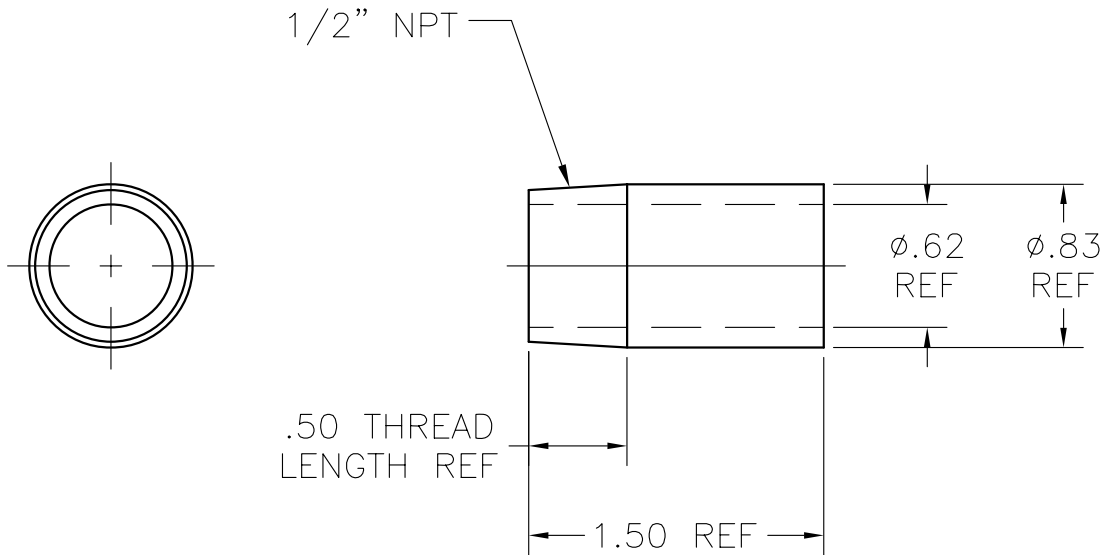
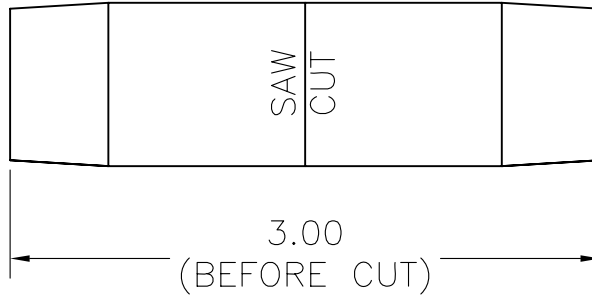
DRWG NO 111-0030-001 SH 1 OF 1 REV 2

DRWN/APPD D SHAFER DATE 7/25/02

TITLE 1/2" NPT X 3.0 LG PIPE NIPPLE
ALTERED FOR (2) PIPE NIPPLES, THREADED ONE SIDE

TOLERANCES EXCEPT WHERE NOTED
FRACT ±1/32 DEC ±.03 ANG ±1° SCALE NTS

MATERIAL ~ STAINLESS STEEL



CUT 3" LONG PIPE NIPPLE IN HALF
(1) NIPPLE = (2) PARTS

2	MATERIAL NOTE ADDED (KCR 201300279)	3/19/2013	DS
REV	REVISION	DATE	BY



ABB KUHLMAN
 INSTRUMENT TRANSFORMER DIVISION
 101 KUHLMAN DR. CRYSTAL SPRINGS, MS 39059

DRWG NO
104-1225-118

SH	OF	REV
1	1	0

DRWN/APPD
D SHAFER

DATE
3/14/12

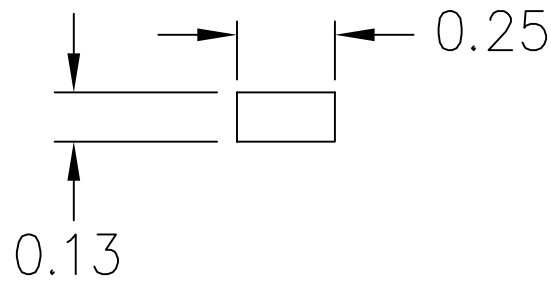
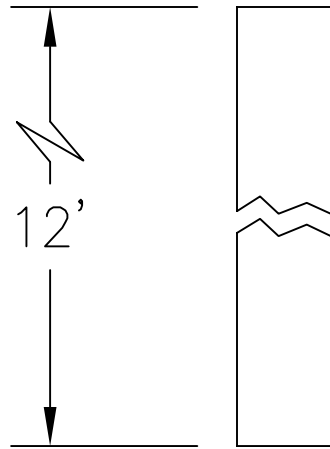
TITLE
GASKET GUIDE

TOLERANCES EXCEPT WHERE NOTED

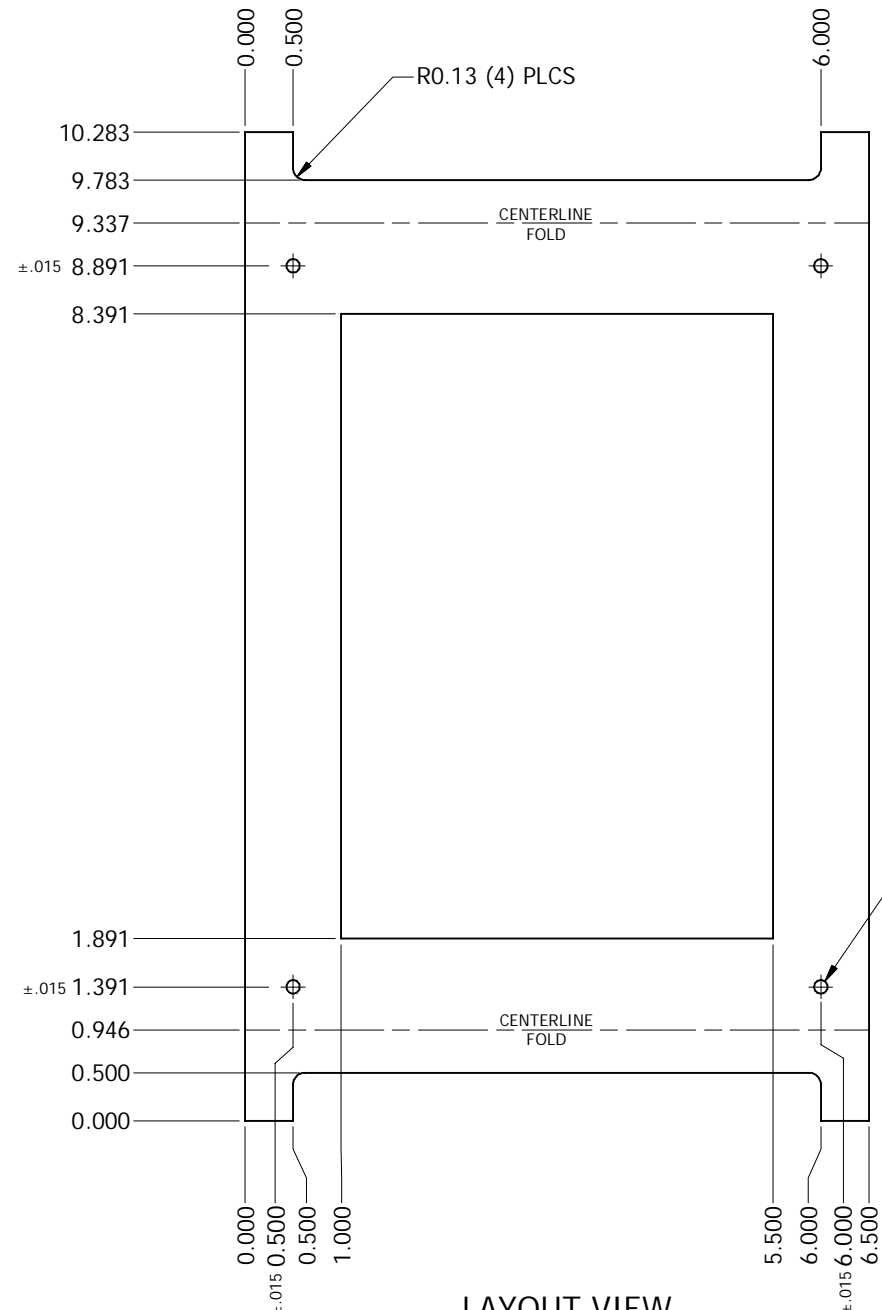
FRACT DEC ANG

SCALE
NTS

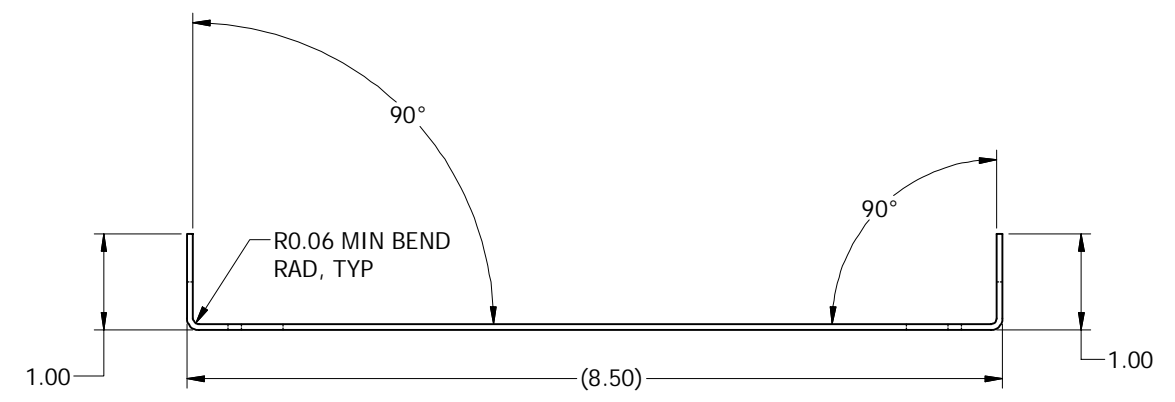
MATERIAL ~ 1/8 X 1/4 MILD STEEL, 12 FEET LONG STOCK



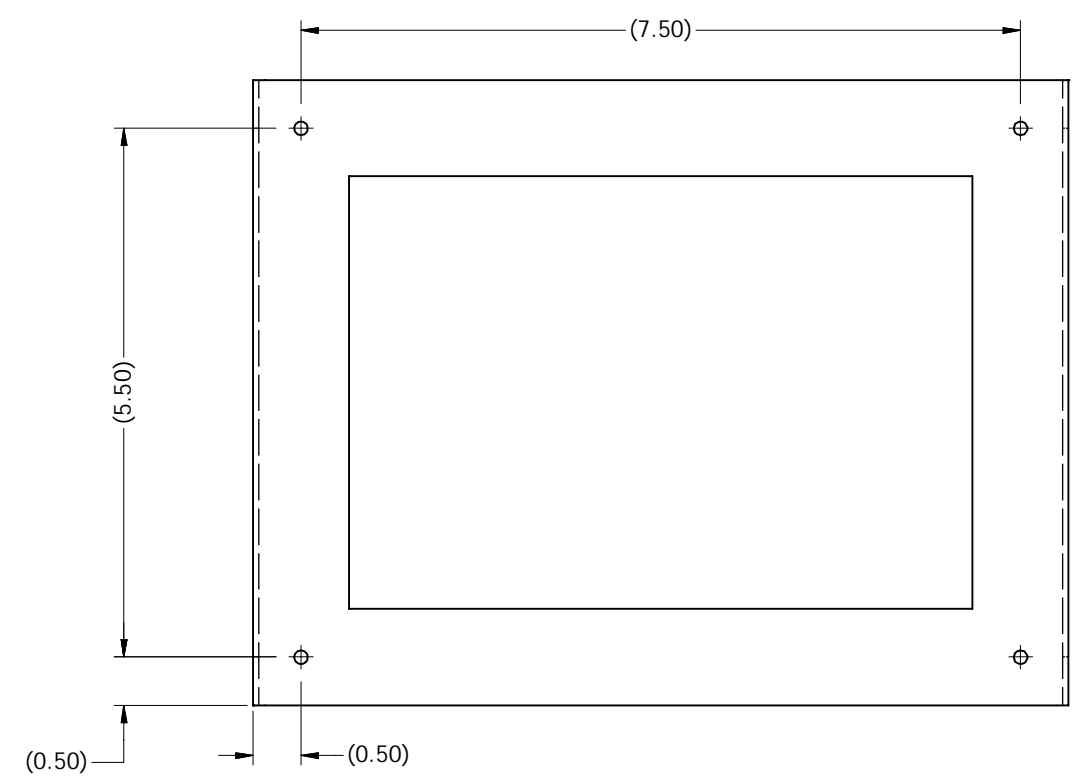
REV	REVISION	DATE	BY



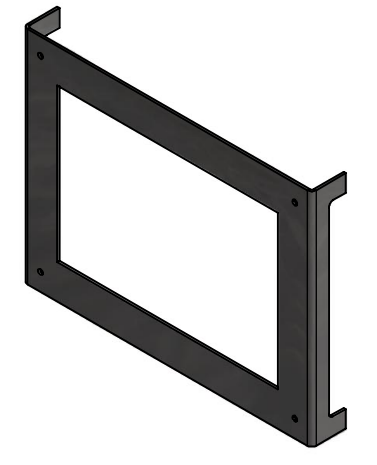
LAYOUT VIEW



TOP VIEW (FORMED)



FRONT VIEW (FORMED)



MATERIAL ~ 16GA (.06) 304 STAINLESS STEEL

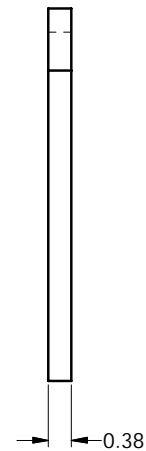
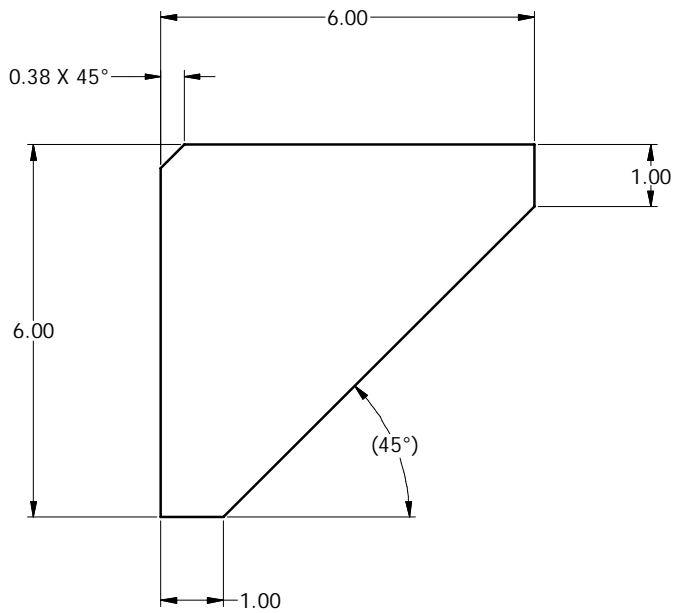
REVISION HISTORY				
REV	DESCRIPTION	KCR	DATE	BY

ABB KUHLMAN
 INSTRUMENT TRANSFORMER DIVISION
 101 KUHLMAN DR. CRYSTAL SPRINGS, MS 39059

THIS DRAWING IS SOLE PROPERTY OF ABB KUHLMAN.
 UNAUTHORIZED DISTRIBUTION OF THIS DRAWING IS PROHIBITED.


TITLE: **FOR SSVT B NAMEPLATE
 NAMEPLATE MTG BRACKET, 16GA S/S**

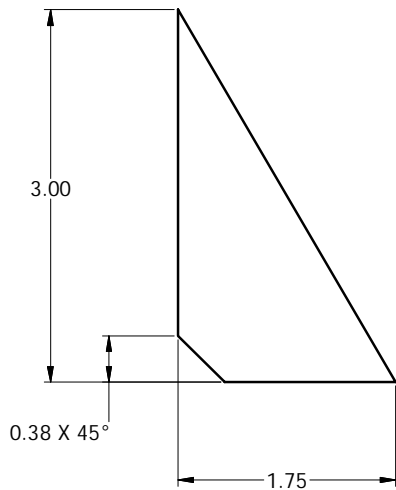
DRAWING NO 130-0100-013.IDW	SH OF REV 1 1 0
DRAWN BY D SHAFER	APPROVED
DATE 6/10/2015	
TOLERANCES EXCEPT WHERE NOTED FRACT ±1/16 DEC ±.06 ANG ±1'	
SCALE NTS	



MATERIAL ~ 3/8" THICK HSLA


REVISION HISTORY				
REV	DESCRIPTION	KCR	DATE	BY
1				D SHAFER

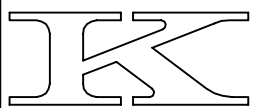
 KUHLMAN ELECTRIC CORPORATION INSTRUMENT TRANSFORMER DIVISION 101 KUHLMAN DR. CRYSTAL SPRINGS, MS 39069	DRAWING NO 430-0080-049.IDW	SH 1	OF 1	REV 0
	DRAWN BY D SHAFER	APPROVED	DATE 5/27/2010	
THIS DRAWING IS SOLE PROPERTY OF KUHLMAN ELECTRIC CORP. UNAUTHORIZED DISTRIBUTION OF THIS DRAWING IS PROHIBITED.		TOLERANCES EXCEPT WHERE NOTED		
3/8" THICK GUSSET, FOR SSVT TANKS		FRACT ± 1/16	DEC ± .06	ANG ± 1'
				SCALE NTS



MATERIAL ~ 3/8" THICK, A36 STEEL PLATE

REVISION HISTORY				
REV	DESCRIPTION	KCR	DATE	BY
1				D SHAFER

 IEC ® KUHLMAN ELECTRIC CORPORATION INSTRUMENT TRANSFORMER DIVISION 101 KUHLMAN DR. CRYSTAL SPRINGS, MS 39069	DRAWING NO 430-0080-055.IDW	SH 1	OF 1	REV 0
	DRAWN BY D SHAFER	APPROVED	DATE 6/6/2012	
THIS DRAWING IS SOLE PROPERTY OF KUHLMAN ELECTRIC CORP. UNAUTHORIZED DISTRIBUTION OF THIS DRAWING IS PROHIBITED.		TOLERANCES EXCEPT WHERE NOTED		
3/8" THICK GUSSET, 1.75 X 3.00		FRACT ± 1/16	DEC ± .06	ANG ± 1'
				SCALE NTS



KUHLMAN ELECTRIC CORPORATION

INSTRUMENT TRANSFORMER DIVISION
101 KUHLMAN DR. CRYSTAL SPRINGS, MS 39059

DRWG NO **130-0175-003**

SH **1** OF **1** REV **0**

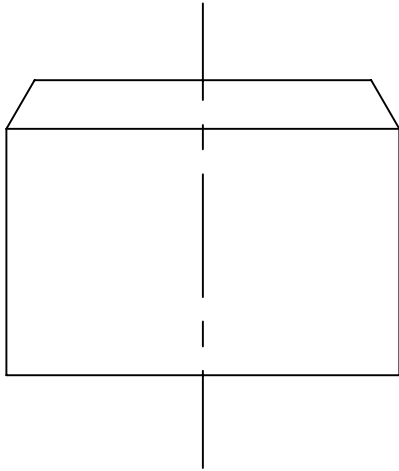
DRWN/APPD
D. JACKSON

DATE
11/8/99

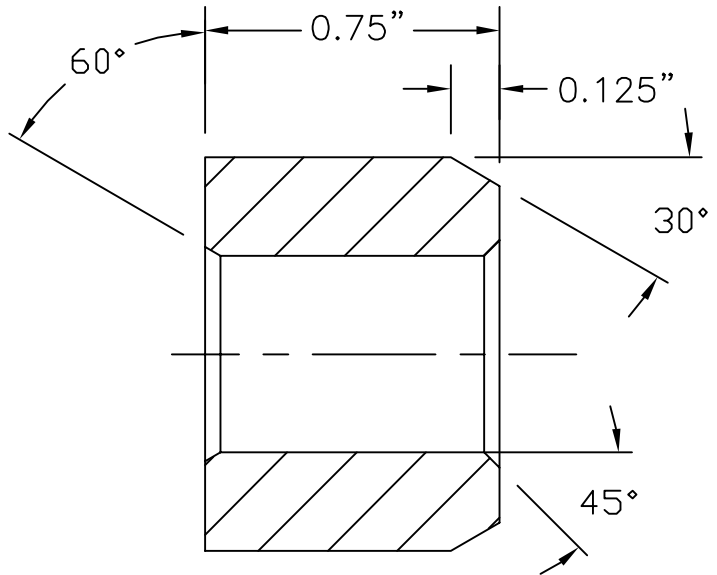
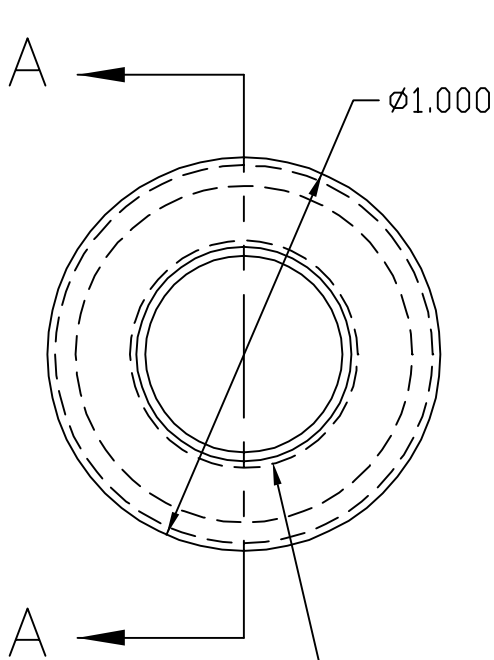
TITLE
TAPPED WELD PAD - 1/2-13 STAINLESS STEEL

TOLERANCES EXCEPT WHERE NOTED
FRACT $\pm 1/32$ DEC $\pm .03$ ANG $\pm 1^\circ$

SCALE
NTS



- NOTE:
- SCALE: 2=1
 - MATERIAL: 304 STAINLESS STEEL



SECTION A-A

1/2"-13 UNC TAP
FROM THIS END

REV	REVISION	DATE	BY